

2020

# SHAPE FUTURE CITIES

FACULTY OF BUILT  
ENVIRONMENT



**UNSW**  
SYDNEY

Australia's  
Global  
University

experience  
**first**

## Louisa Hartley

Louisa is a Bachelor of Architectural Studies student with a passion for spatial design and exploring form through material and human connections.

She has taken part in a number of international study tours as part of her degree, including trips to Venice and Vienna.

*“Having the chance to go overseas during my studies was very educational. It was inspiring to see the architectural history in Europe and also important to see the way things can be done differently in Australia.”*

She is inspired by the works of Tadao Ando and Glenn Murcutt AO, who won the prestigious Pritzker Prize for Architecture in 2002 and is a Professor of Practice at UNSW Built Environment.



---

**“Having members of staff in the faculty that are renowned and award-winning is incredibly inspiring. UNSW Sydney is recognised as one of the best places for learning and I know that what I’ve learnt is current, up-to-date and can be applied in the real world.”**

---

LOUISA HARTLEY

Bachelor of Architectural Studies



Work Integrated Learning.  
Image: Louise Reilly



Career Ready Mentoring Program.  
Image: Chrissie Hall



Industrial Design in the Asian Century, International Studio in Japan.  
Image: Dr Mariano Ramirez

## Shaping future cities

At UNSW Built Environment, we shape future cities. Cities that are resilient, informed, healthy and smart — that are connected, green, liveable and inclusive. Our vision is to be a global leader through high impact research and education that is vital to cities, their built environments and inhabitants.

## Career ready graduates

UNSW Built Environment is committed to its students and provides an education that is broad and deep.

Through interdisciplinary education, cross faculty initiatives, internships, work integrated learning, mentoring, online courses, flexible pathways, internationalised programs and research projects, you will shape your own path to a global career.



## Internationalised education

Throughout your studies, you will have the opportunity to take part in overseas projects, attend lectures delivered by international renowned academics and practitioners as well as create your own global network with your peers.

## Student opportunities

### Career-ready mentoring program

To help you transition from study to work.

### Design futures labs

Bring your ideas to life with the latest technologies.

### International experiences

Gain a global perspective and work on real-life projects across the world.

### Work integrated learning

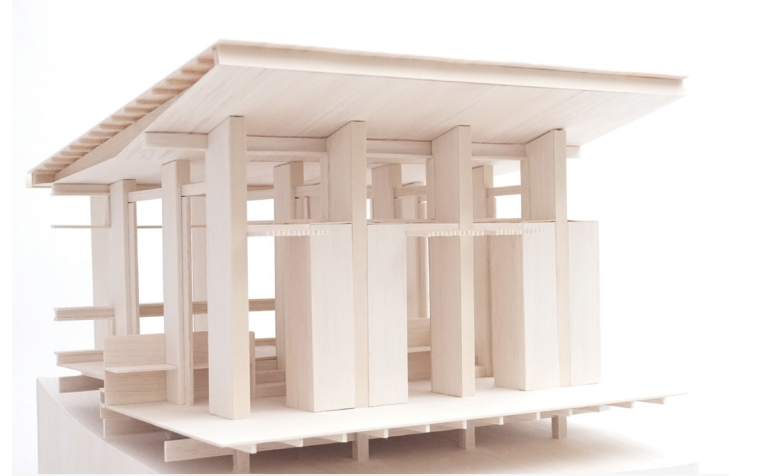
Professional placements, practicums and embedded industry learning experiences as part of your study.

### Industry exposure

Attend public lectures, exhibit your work and take advantage of the diverse alumni network.



The Ripple Bench, designed for indoor shopping malls, inspired by the waves of Australian beaches. Image: Wei Pan, Industrial Design.



Flexible coastal overnight accommodation structure, accommodating individuals, friends and families. Image: Jeremy Yip, Architecture.

## Bachelor of Architectural Studies

**Duration** 3 years (+ 1 year Honours option)

**2019 Lowest ATAR<sup>1</sup>** 90.00

**2019 Lowest Selection Rank<sup>2</sup>** 95.00 **2020 GE Rank<sup>3</sup>** 95.00

**Subjects available for HSC Plus<sup>4</sup>** Ancient History, Design & Technology, English Advanced, Modern History, Visual Arts

This degree prepares you for a professional career in architecture and other design-based industries. You will learn to design buildings and their settings to meet individual and community needs, taking sustainability, culture and economy into account. Together with the Master of Architecture, this is your launchpad into contemporary design practice.

### Career opportunities

Upon completion of an accredited masters degree, career opportunities include Consulting Architect in private practice, Specialist Architect in areas such as heritage, Building Scientist, Environmental Consultant, Architect in multidisciplinary design practice, Architect in a government department or large commercial architectural firm, Architectural Critic, Academic and Researcher.

### Structure



## UNSW-Tongji Double Degree in Architecture

**Duration** 4 years **2019 Lowest ATAR<sup>1</sup>** N/A

**2019 Lowest Selection Rank<sup>2</sup>** ATAR + portfolio + interview

**2020 GE Rank<sup>3</sup>** N/A

Progress your architectural career at the global level. This unique double degree, taught in English at both UNSW and Shanghai's Tongji University, prepares you for professional practice in both Australia and China. On completion you will be eligible to apply for postgraduate studies in Architecture at either university.

### Career opportunities

This degree prepares you for work in both China and Australia. Upon completion of an accredited masters, you will be career-ready to pursue careers as a Consulting Architect in a private practice, Specialist architect, Building Scientists, Architect in multidisciplinary design practice, Architect in government or in a large commercial practice architectural firm.

### Structure



### Study areas

- Design Studio
- Communications
- History and Theory
- Technology and Environment
- Professional Practice
- Computer Modelling
- Technical Drawing and Model Making
- Materials
- Structure and Construction

### Professional accreditation

The Bachelor of Architectural Studies is the undergraduate pathway to the professionally accredited postgraduate Master of Architecture degree which has professional recognition from the NSW Architects Registration Board.

### Alternative admission

An alternative admissions scheme is available for this degree, which allows you to submit a portfolio to support your ATAR. Find out more at [be.unsw.edu.au/alternative-admission](http://be.unsw.edu.au/alternative-admission).

### Study areas

- Design Studio
- Communications
- History and Theory
- Technology
- Practice
- Computer Modelling
- Technical Drawing and Model Making
- Materials
- Structure and Construction

### Professional accreditation

The UNSW-Tongji Double Degree in Architecture is an undergraduate pathway to the professionally accredited postgraduate Master of Architecture degree which has professional recognition from the NSW Architects Registration Board.

### Entry

Students commence this double degree at Tongji University. The Tongji academic year commences in September.



Students working at our Design Futures Lab.  
Image: Reece McMillan



Artificial Reef for Bays Precinct, Sydney using marine biology and computational design.  
Image: Hank Haeulser, Computational Design

## Bachelor of City Planning (Honours)

**Duration** 4 years (includes practice year) **2019 Lowest ATAR<sup>1</sup>** 74.80

**2019 Lowest Selection Rank<sup>2</sup>** 84.00 **2020 GE Rank<sup>3</sup>** 84.00

**Subjects available for HSC Plus<sup>4</sup>** Design & Technology, Economics, English Advanced, Geography, Legal Studies, Society and Culture

Learn to shape sustainable, equitable, healthy and inspiring built environments with the Bachelor of City Planning (Honours). From theoretical work around contemporary planning issues to work integrated learning with many city, state and international partners, this program provides you with the necessary foundations for a career as a city planner.

### Career opportunities

You could pursue a career as a City Planner, Strategic Planner, Environmental Planner, Land use Planner, Urban Policy and Research Consultant, Urban Consultant or Development Assessment Planner. You may also become a specialist in planning law if you study City Planning (Honours) Laws degree.

### Study areas

- Planning Theory and Methodology
- Sociology
- City Economics
- Planning Law
- Transport Planning
- Environmental Science
- Heritage Studies
- Urban Design
- Planning History

### Professional accreditation

The Bachelor of City Planning (Honours) is accredited by the Planning Institute of Australia (PIA).

### Combine this degree with:

Law

### Structure



## Bachelor of Computational Design

**Duration** 3 years (+ 1 year Honours option)

**2019 Lowest ATAR<sup>1</sup>** 71.00

**2019 Lowest Selection Rank<sup>2</sup>** 80.00 **2020 GE Rank<sup>3</sup>** 80.00

**Subjects available for HSC Plus<sup>4</sup>** Design & Technology, Information Processes and Technology, Mathematics, Mathematics Extension 1, Mathematics Extension 2, Software Design and Development, Visual Arts

The Bachelor of Computational Design gives you an understanding of digital technologies and their use in the built environment. You'll learn how to design responsive, interactive spaces and develop skills in computer design, 3D modelling, robotic and digital fabrication. You will be able to apply these skills in industrial/urban design and architectural contexts.

### Career opportunities

Architectural & Urban Design Specialist, Digital Optimisation Consultant (architecture/ engineering firms), Software Solutions Developer, Design/ Production Manager (construction firms), Smart Cities Consultant

(planning offices & Councils), Urban Data Analyst (business consultancy firms), Design Technology Manager (architecture design firms), Digital Fabrication and Smart Manufacturing Specialist, Animation Professional, Gaming Environment Developer, Building Information Model Implementer (BIM).

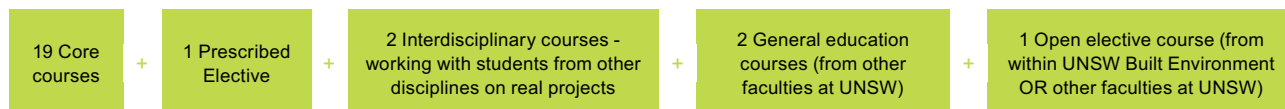
### Study areas

- Design Studio
- Computer Aided Design (CAD)
- Building Modelling
- Rendering
- Animation
- Multimedia
- Information Technology in Design

### Alternative admission

An alternative admissions scheme is available for this degree, which allows you to submit a portfolio to support your ATAR. Find out more at [be.unsw.edu.au/alternative-admission](http://be.unsw.edu.au/alternative-admission).

### Structure



# Bachelor of Construction Management and Property

**Duration** 3 years

**2019 Lowest ATAR<sup>1</sup>** 76.05

**2019 Lowest Selection Rank<sup>2</sup>** 85.00

**2020 GE Rank<sup>3</sup>** 85.00

**Subjects available for HSC Plus<sup>4</sup>** English Advanced, Mathematics, Mathematics Extension 1, Mathematics Extension 2

In this degree you'll develop broad knowledge and skills across the management of property development, construction and design work, construction site operation and project management as well as quantity surveying.

## Career opportunities

Construction Manager, Project Manager, Site Manager, Property Developer, Property Valuation, Property and Asset Manager or Analyst, Quantity Surveyor, Estimator, Construction Planner, Construction Consultant, Specialised Legal Advisor, Corporate Real Estate Advisor.

## Study areas

- Building Construction
- Property Development
- Facilities Management
- Quantity Surveying
- Construction Technology
- Building Science Materials and Structure
- Management
- Economics and Law

## Professional accreditation

The Bachelor of Construction Management and Property is accredited by The Australian Institute of Building (AIB), The Australian Institute of Quantity Surveyors (AIQS) and The Royal Institution of Chartered Surveyors (RICS).

## Structure

20 Core courses

+

2 Interdisciplinary courses - working with students from other disciplines

+

2 General education courses (from other faculties at UNSW)



Construction Management and Property students on an international study trip.  
Image: James Hargrave



Design for Celestino's Sydney Science Park.  
Image: Kaylie Salvatori, Landscape Architecture.

# Bachelor of Industrial Design

**Duration** 3 years (+ 1 year Honours option)

**2019 Lowest ATAR<sup>1</sup>** 72.45

**2019 Lowest Selection Rank<sup>2</sup>** 80.00

**2020 GE Rank<sup>3</sup>** 80.00

**Subjects available for HSC Plus<sup>4</sup>** Design & Technology, Mathematics, Mathematics Extension 1, Mathematics Extension 2, Visual Arts

This degree will equip you to influence the way we live by designing what we use every day. You'll learn about design process, technology and materials, visual communication and more, taking the technical aspects of design in tandem with user experience.

## Career opportunities

Product Designer within a multi-disciplinary design team (architectural and engineering consultancies), Product Designer within the manufacturing sector (consumer and public access products electrical, transport, scientific, medical, retail, furniture, telecommunications), Digital Multimedia Designer, Product Branding Marketer, Packaging Designer, Exhibition Designer, Graphic Designer, Service and Strategic Designer.

## Study areas

- Design Studio
- Computer Aided Design (CAD)
- 3D Digital Modelling
- Commerce and Marketing
- Science and Engineering
- Materials and Manufacturing

## Professional membership

Graduates of the Bachelor of Industrial Design are eligible for membership of the Design Institute of Australia (DIA).

## Alternative admission

An alternative admissions scheme is available for this degree, which allows you to submit a portfolio to support your ATAR. Find out more at [be.unsw.edu.au/alternative-admission](http://be.unsw.edu.au/alternative-admission)

## Structure

10 Core courses

+

8 Design studio courses

+

2 Interdisciplinary courses - working with students from other disciplines

+

2 Open elective course (from within UNSW Built Environment OR other faculties at UNSW)

+

2 General education courses (from other faculties at UNSW)

+

2 Elective courses (from UNSW Built Environment)

# Bachelor of Interior Architecture (Honours)

<b>Duration</b> 4 years	<b>2019 Lowest ATAR<sup>1</sup></b> 71.30
<b>2019 Lowest Selection Rank<sup>2</sup></b> 80.00	<b>2020 GE Rank<sup>3</sup></b> 80.00
<b>Subjects available for HSC Plus<sup>4</sup></b> Design & Technology, English Advanced, Textiles & Design, Visual Arts	

From the scale of rooms to cities, this degree trains you to develop creative solutions to aesthetic challenges in the built environment. You'll learn about interior environments including all aspects of their structural, spatial, social and material assembly, then discover how to put your skills and knowledge into professional practice.

## Career opportunities

Professional Designer in architecture and design practices, Private Consultant, specialising in residential, retail, workplace, commercial or hospitality, Corporate Interior Designer specialising in multi-storey residential, retail, hospitality, medical, hotel or exhibition design, your own interior architecture or design practice, Project Manager, Construction Manager.

## Study areas

- Design Studio
- Communications
- Technology
- Practice
- History and Theory
- Computer Modelling
- Technical Drawing and Model Making
- Materials

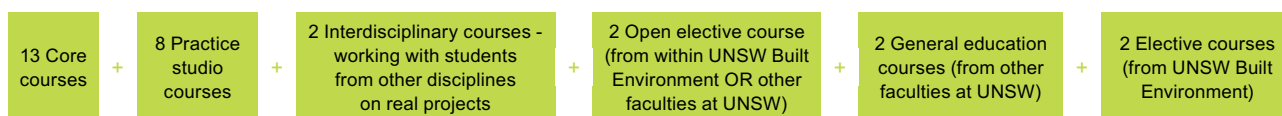
### Professional accreditation

The Bachelor of Interior Architecture is recognised by the Interior Designer/Interior Architecture Educators Association (IDEA). Graduates are eligible for membership to the International Federation of Interior Architects/Designers (IFI) and Design Institute of Australia (DIA).

### Alternative admission

An alternative admissions scheme is available for this degree, which allows you to submit a portfolio to support your ATAR. Find out more at [be.unsw.edu.au/alternative-admission](http://be.unsw.edu.au/alternative-admission).

## Structure



# Bachelor of Landscape Architecture (Honours)

<b>Duration</b> 4 years	<b>2019 Lowest ATAR<sup>1</sup></b> 75.10
<b>2019 Lowest Selection Rank<sup>2</sup></b> 80.00	<b>2020 GE Rank<sup>3</sup></b> 80.00
<b>Subjects available for HSC Plus<sup>4</sup></b> Design & Technology, English Advanced, Geography, Visual Arts	

Landscape architects transform the world around us, planning and designing the shared environments in which we live, work, travel and play. In this professionally accredited degree, through coursework and work experience, you will study built and natural urban systems as the basis for designing liveable, healthv, sustainable and resilient cities.

## Career opportunities

Landscape Architect in private practice, Landscape Technical Officer, Project Manager or Strategic Planner in local or state government, Landscape Planning and Management Specialist, Designer with a landscape construction company.

## Study areas

- Design Studio
- Environmental Technology and Practice
- Ecological Processes
- Communication
- Plants and Design
- History and Theory
- Landscape Engineering Principles

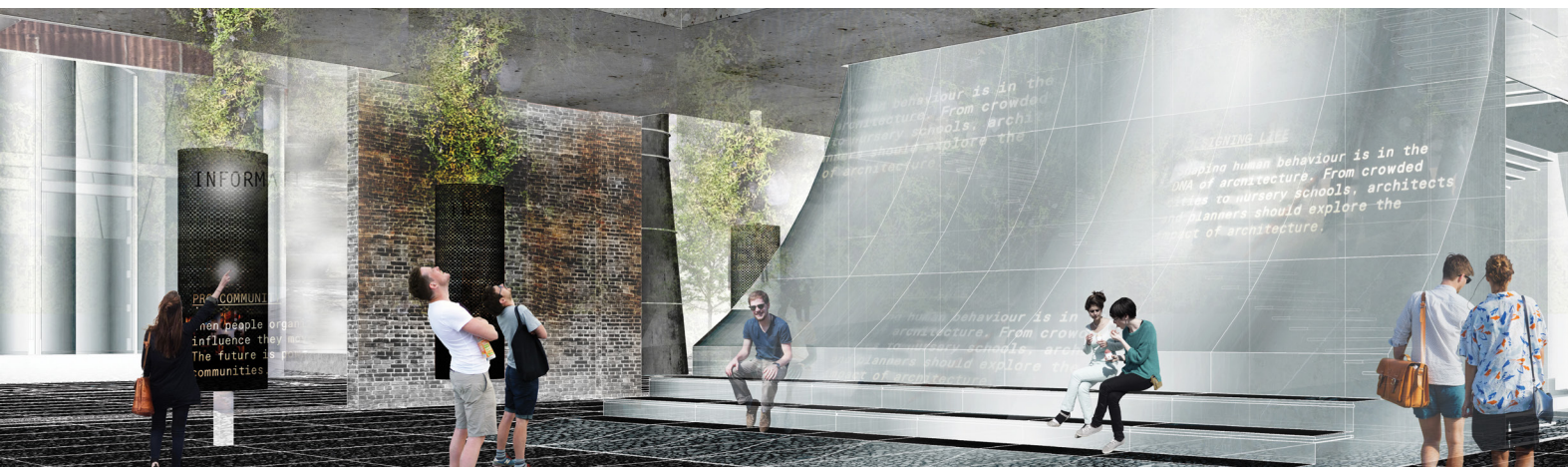
### Professional accreditation

The Bachelor of Landscape Architecture is accredited by the Australian Institute of Landscape Architects (AILA).

### Alternative admission

An alternative admissions scheme is available for this degree, which allows you to submit a portfolio to support your ATAR. Find out more at [be.unsw.edu.au/alternative-admission](http://be.unsw.edu.au/alternative-admission).

## Structure



White Bay Power Station, Sydney. View of Forum Space.  
Image: Lauren Rutstein. Interior Architecture.

## How to apply

UNSW Built Environment welcomes you to apply for admission to one of our competitive and internationally recognised degrees. Admission is based on academic merit and, in some cases, your creative potential demonstrated through a portfolio submission. For more information, visit [futurestudents.unsw.edu.au/how-to-apply](http://futurestudents.unsw.edu.au/how-to-apply).

## Domestic applicants

**(Australian citizens, Australian permanent residents, Australian permanent humanitarian visa holders and New Zealand citizens)**

All applications for undergraduate study by domestic applicants are made through the University Admissions Centre (UAC). To lodge your application, visit [uac.edu.au/undergraduate/apply](http://uac.edu.au/undergraduate/apply).

As a domestic student, you may be eligible for adjustment factors including HSC Plus, Elite Athletes, Performers and Leaders and the Educational Access Scheme. To find out more about adjustment factors and how to apply, visit [futurestudents.unsw.edu.au](http://futurestudents.unsw.edu.au).

Guaranteed Entry Rank (ATAR + adjustment factors) allows us to tell you what selection rank will guarantee you a place in a particular degree at UNSW. For more information, visit [unsw.edu.au/ge](http://unsw.edu.au/ge).

## Alternative Admission Scheme

UNSW Built Environment recognises that your Australian Tertiary Admission Rank (ATAR) or equivalent may not reflect your potential in creative thinking and making. We are pleased to offer you an alternative admission scheme giving you the opportunity to submit a portfolio of your work to support your ATAR. More information is available at [be.unsw.edu.au/alternative-admission](http://be.unsw.edu.au/alternative-admission).

## Experience UNSW Built Environment

Attend one of our Experience Built Environment workshops during the April or July school holidays and discover how our degrees shape future cities. Workshops are being held on:

- 16 and 18 April 2019
- 10 and 18 July 2019

For more information visit [be.unsw.edu.au/events](http://be.unsw.edu.au/events).

CRICOS Provider Code: 00098G | ABN: 57 195 873 179

© Copyright of the Faculty of Built Environment, The University of New South Wales 2019. The information in this publication is correct at January 2019. UNSW reserves the right to change any degree, admission requirement or other information herein without any prior notice.

The information contained in this publication with regard to Assumed Knowledge pertains to HSC subjects. For students studying a different but equivalent qualification please contact the Universities Admissions Centre (UAC) for further information.

The information contained in this publication applies to Australian citizens, Australian permanent residents, Australian permanent humanitarian visa holders and New Zealand citizens only. All international students should contact UNSW Future Students on 1300 864 679 for admission procedures and degree information.

### NOTES

1. The 2019 Lowest ATAR is the lowest ATAR (before adjustment factors were applied) to which an offer was made.
2. The 2019 Lowest Selection Rank is the adjusted rank (ATAR plus adjustment factors) you would have needed to gain entry to this degree in 2019. To see a complete picture of UNSW offer data, visit [unsw.edu.au/degrees](http://unsw.edu.au/degrees).
3. For more information on Guaranteed Entry, please visit [unsw.edu.au/ge](http://unsw.edu.au/ge).
4. For more information in HSC Plus adjustment factors please visit [futurestudents.unsw.edu.au/adjustment-factors-hsc-plus](http://futurestudents.unsw.edu.au/adjustment-factors-hsc-plus).

## UNSW Built Environment

**Ask a question** [unsw.edu.au/ask](http://unsw.edu.au/ask)

**Call** 1300 UNI NSW (1300 864 679)

**Visit** [be.unsw.edu.au](http://be.unsw.edu.au)

**Like** [facebook.com/UNSW Built Environment](https://facebook.com/UNSW_Built_Environment)

